

# Espagnolette Handles

Four traditional period Espagnolette Handles, designed to operate multipoint window mechanisms, all feature spring assistance for positive open and closed positioning.

A lockable version with removable key is also available, as is an optional 8mm adaptor sleeve.



## Fixings

Supplied with finish matched M5 x 40mm machine screws and fitted spindle.

## How to Order

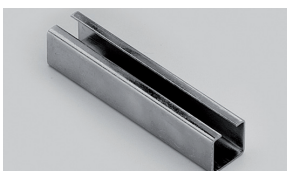
- 1) select HANDLE (e.g. **0350**)
- 2) choose LOCKING OPTION if required (e.g. 0350**LK**)
- 3) add FINISH (e.g. 0350**PB**, or 0350**LK/PB**)
- 4) add HANDING (e.g. 0350**PB/LH**, or 0350**LK/PB/LH**).

NB. An adaptor sleeve is available for locking mechanisms with an 8mm hub (e.g. 0350**PB/LH/8MM**).

**Finishes** - See our price list or website for finish availability.



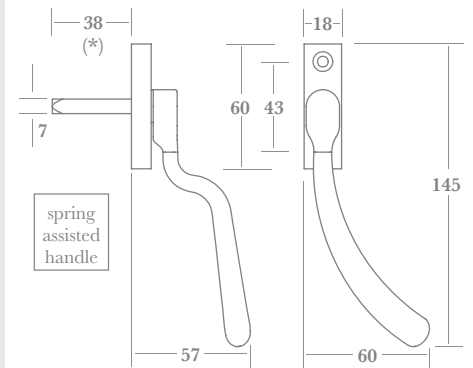
**LK** version with nickel plated key



optional 8mm adaptor sleeve (stainless steel)



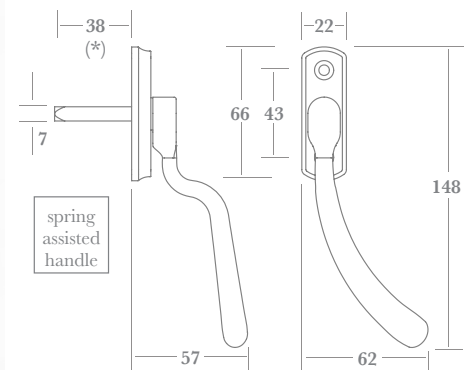
▲ **0349** (RH shown)



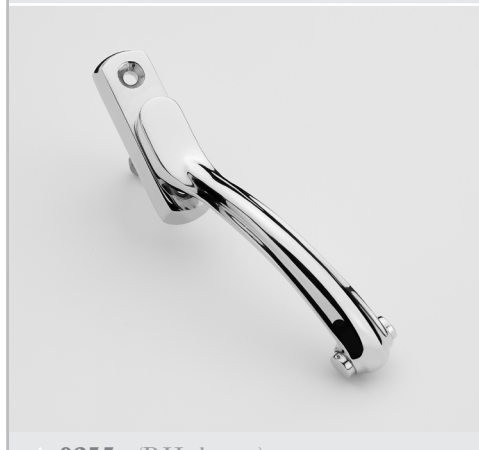
(\*) other lengths available upon request



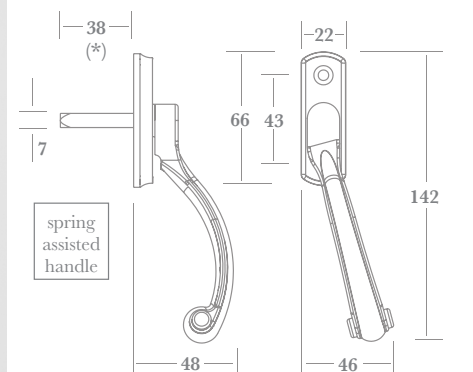
▲ **0350** (RH shown)



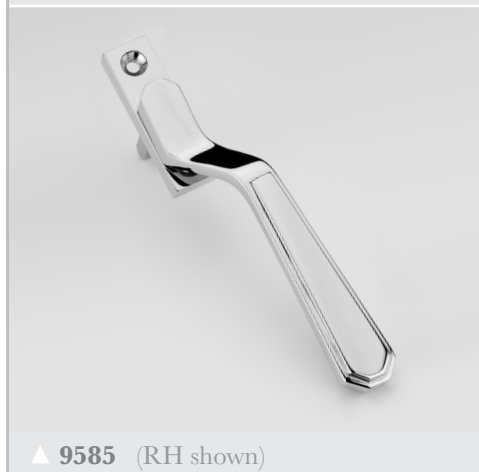
(\*) other lengths available upon request



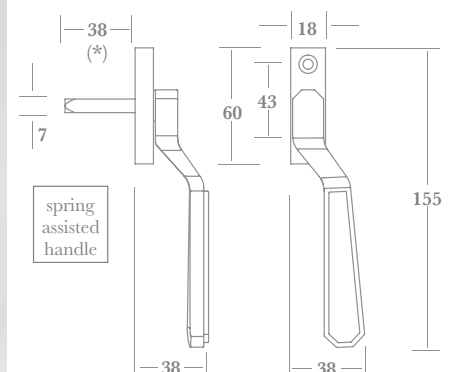
▲ **0355** (RH shown)



(\*) other lengths available upon request



▲ **9585** (RH shown)



(\*) other lengths available upon request

# Espagnolette Handles

Three classic and two contemporary Espagnolette Handles designed to operate multipoint window mechanisms, each featuring spring assistance for positive open and closed positioning. A lockable version with removable key is also available.



## Fixings

Supplied with finish matched M5 x 40mm machine screws and fitted spindle.

## How to Order

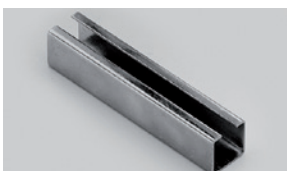
- 1) select HANDLE (e.g. **0306**)
- 2) choose LOCKING OPTION if required (e.g. 0306**LK**)
- 3) add FINISH (e.g. 0306**PB**, or 0306LK/**PB**)
- 4) add HANDING (e.g. 0306PB/**LH**, or 0306LK/PB/**LH**).

NB. An adaptor sleeve is available for locking mechanisms with an 8mm hub (e.g. 0306LK/PB/LH/**8MM**).

**Finishes** - See our price list or website for finish availability.



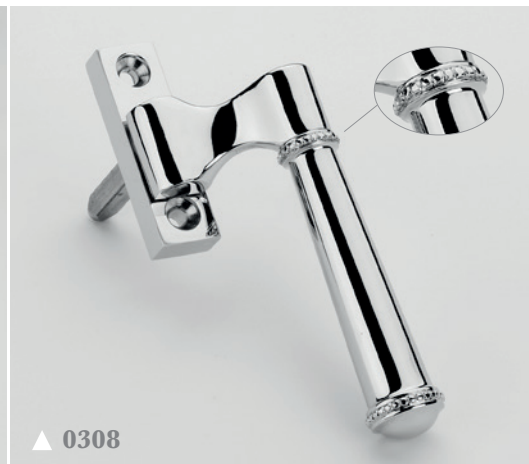
**LK** version  
with nickel  
plated key



optional 8mm adaptor  
sleeve (stainless steel)



▲ 0292

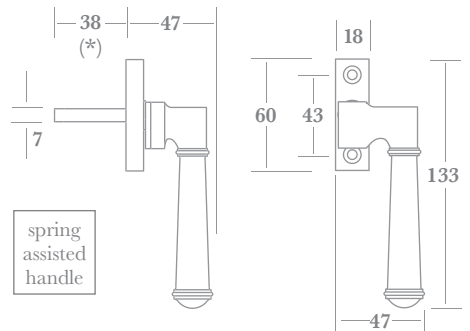


▲ 0308



▲ 0306

(RH shown)



(\*) other lengths available upon request

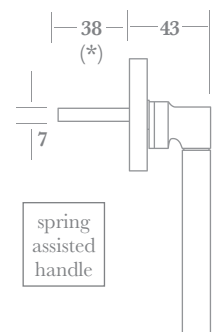


▲ 0351

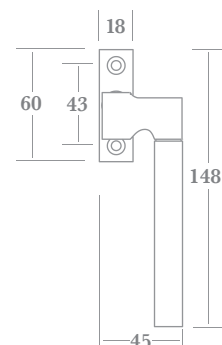


▲ 0352

(RH shown)



spring  
assisted  
handle



(\*) other lengths available  
upon request

# Espagnolette Handles

Four classic and one monkey tail design Espagnolette Handle's for the operation of multipoint window mechanisms, each featuring spring assistance for positive open and closed positioning.

A lockable version with removable key is also available, and optional 8mm adaptor sleeve.



▲ 0290



▲ 0300



▲ 0302



▲ 0304

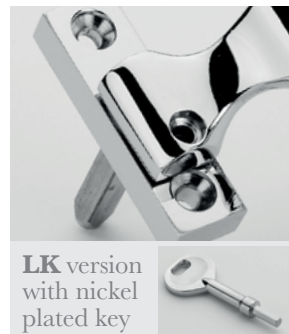
## Fixings

Supplied with finish matched M5 x 40mm machine screws and fitted spindle.

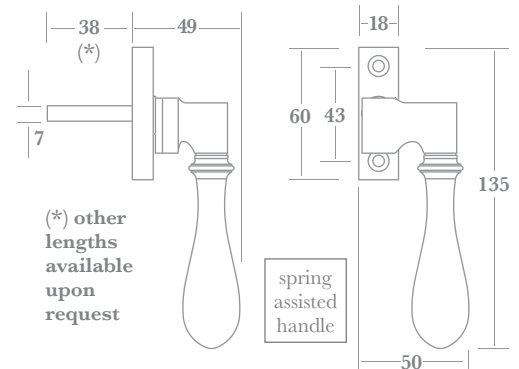
## How to Order

- 1) select HANDLE (e.g. **0302**)
- 2) choose LOCKING OPTION if required (e.g. **0302LK**)
- 3) add FINISH (e.g. **0302PB**, or **0302LK/PB**)
- 4) add HANDING (e.g. **0302PB/LH**, or **0302LK/PB/LH**).

NB. An adaptor sleeve is available for locking mechanisms with an 8mm hub (e.g. **0302LK/PB/LH/8MM**).



**LK** version  
with nickel  
plated key



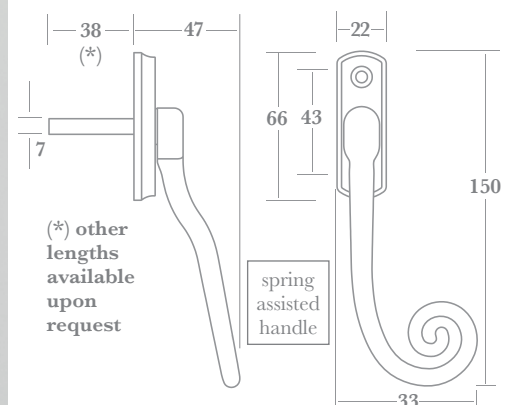
**Finishes** - See our price list or website for finish availability.



▲ 0360



**0360LK**  
with nickel  
plated key





# Espagnolette Handles

Espagnolette Handle for the operation of multipoint window mechanisms. Available with an optional 8mm adaptor sleeve if required.



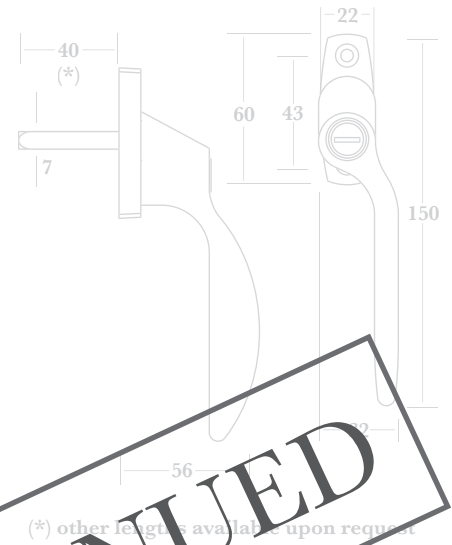
two nickel plated  
keys supplied

▲ 0358 (RH shown)

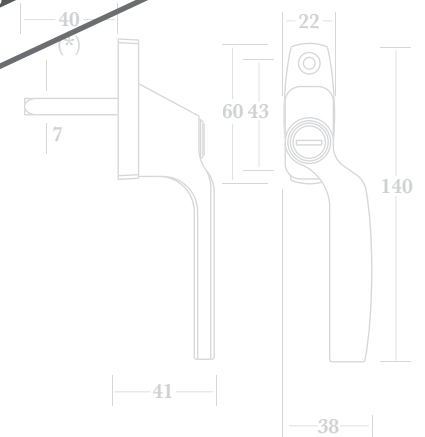


two nickel plated  
keys supplied

▲ 0359 (RH shown)



(\*) other lengths available upon request



(\*) other lengths available upon request

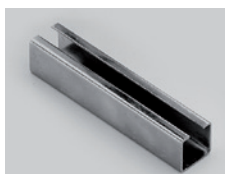
## Fixings

Supplied with finish matched M5 x 40mm machine screws and fitted spindle.

## How to Order

- 1) select HANDLE (e.g. **0361**)
  - 2) add FINISH (e.g. 0361**PB**)
  - 3) add HANDING (e.g. 0361PB/**LH**).
- NB. An adaptor sleeve is available for locking mechanisms with an 8mm hub (e.g. 0361PB/LH/**8MM**).

**Finishes** - See our price list or website for finish availability.



▲ optional 8mm  
adaptor sleeve  
(stainless steel)

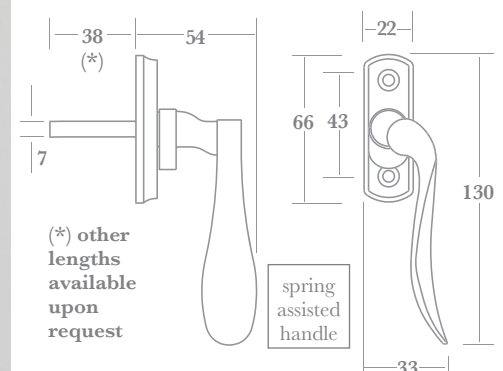


**0361LK**  
with nickel  
plated key



RH shown

▲ 0361



(\*) other  
lengths  
available  
upon  
request

spring  
assisted  
handle